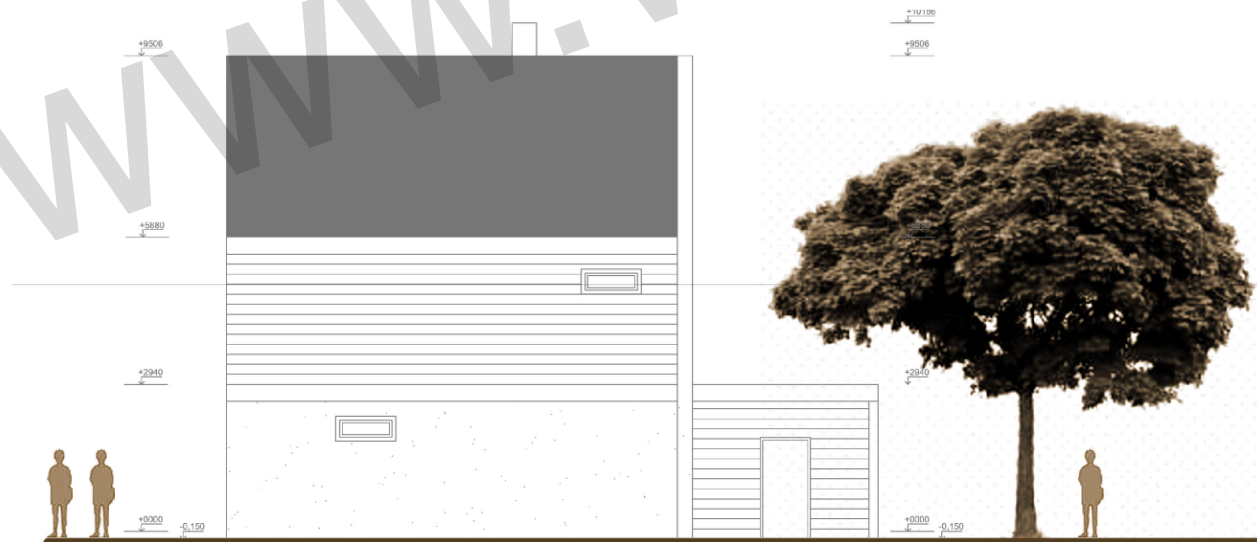


POHLED SEVERNÍ, POHLED JIŽNÍ

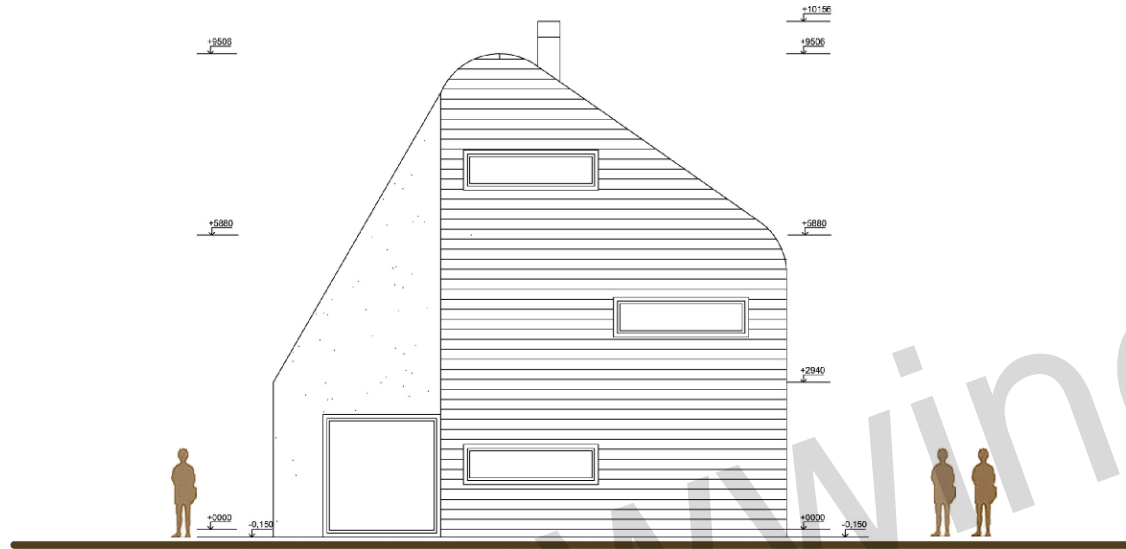
RD AXIS



MĚŘÍTKO 1:100

POHLED VÝCHODNÍ, POHLED ZÁPADNÍ

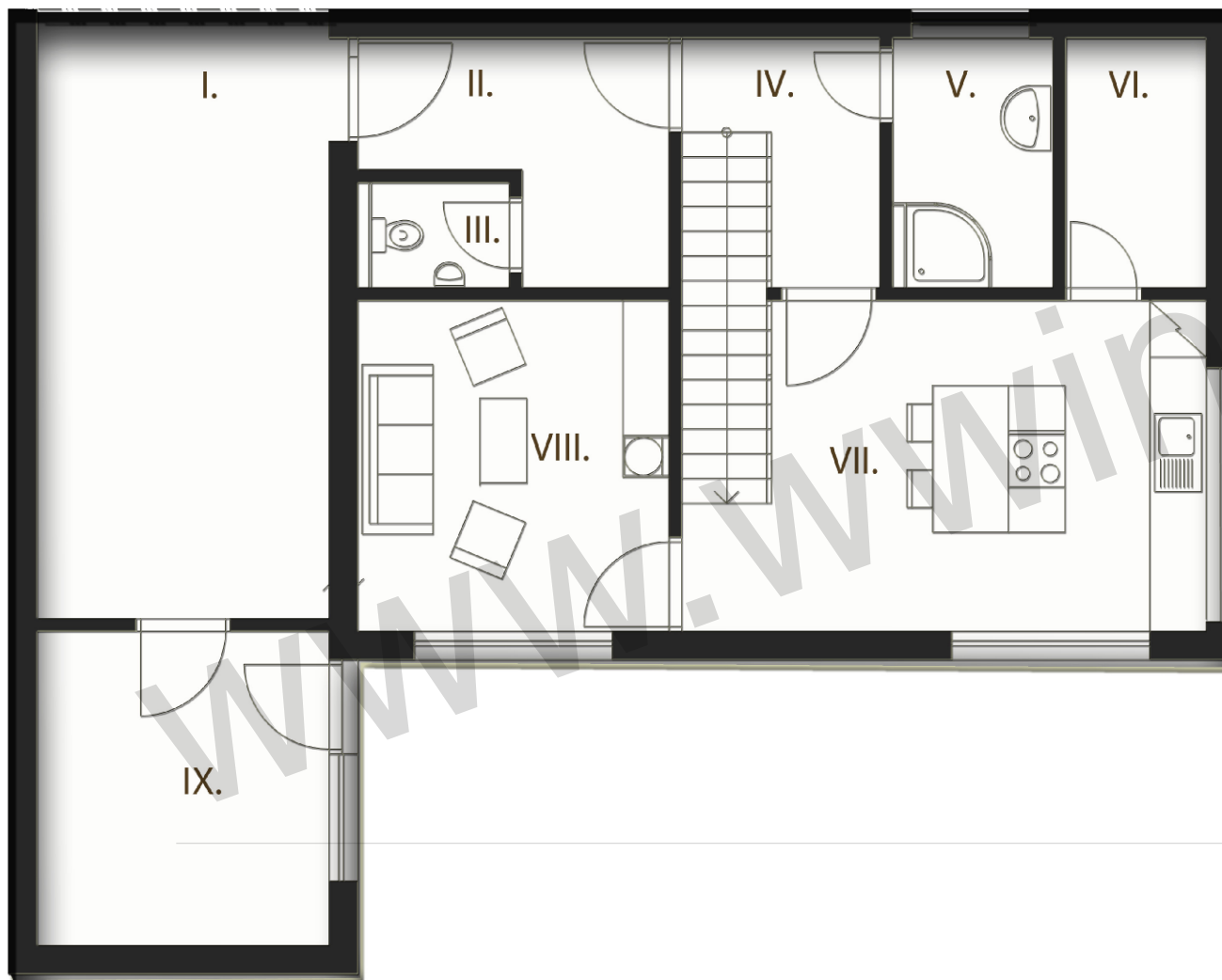
RD AXIS



MĚŘÍTKO 1:100

PŮDORYS 1.NP

RD AXIS



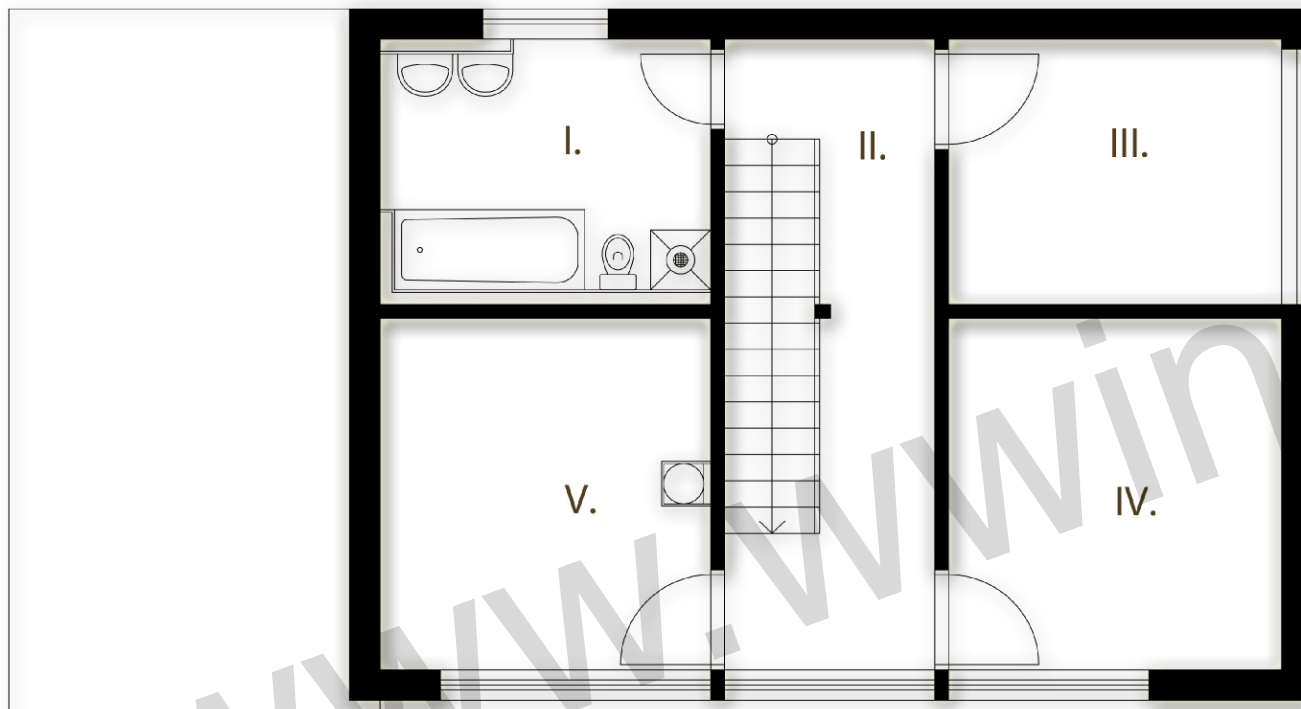
I. GARÁŽ	20,54 m ²
II. CHODBA	6,56 m ²
III. WC	1,78 m ²
IV. CHODBA	4,00 m ²
V. KOUPELNA	4,51 m ²
VI. SPÍŽ	3,95 m ²
VII. KUCHYŇ	17,50 m ²
VIII. OB. POKOJ	11,59 m ²
IX. SKLAD	3,74 m ²

MĚŘÍTKO 1:50



PŮDORYS 2.NP

RD AXIS



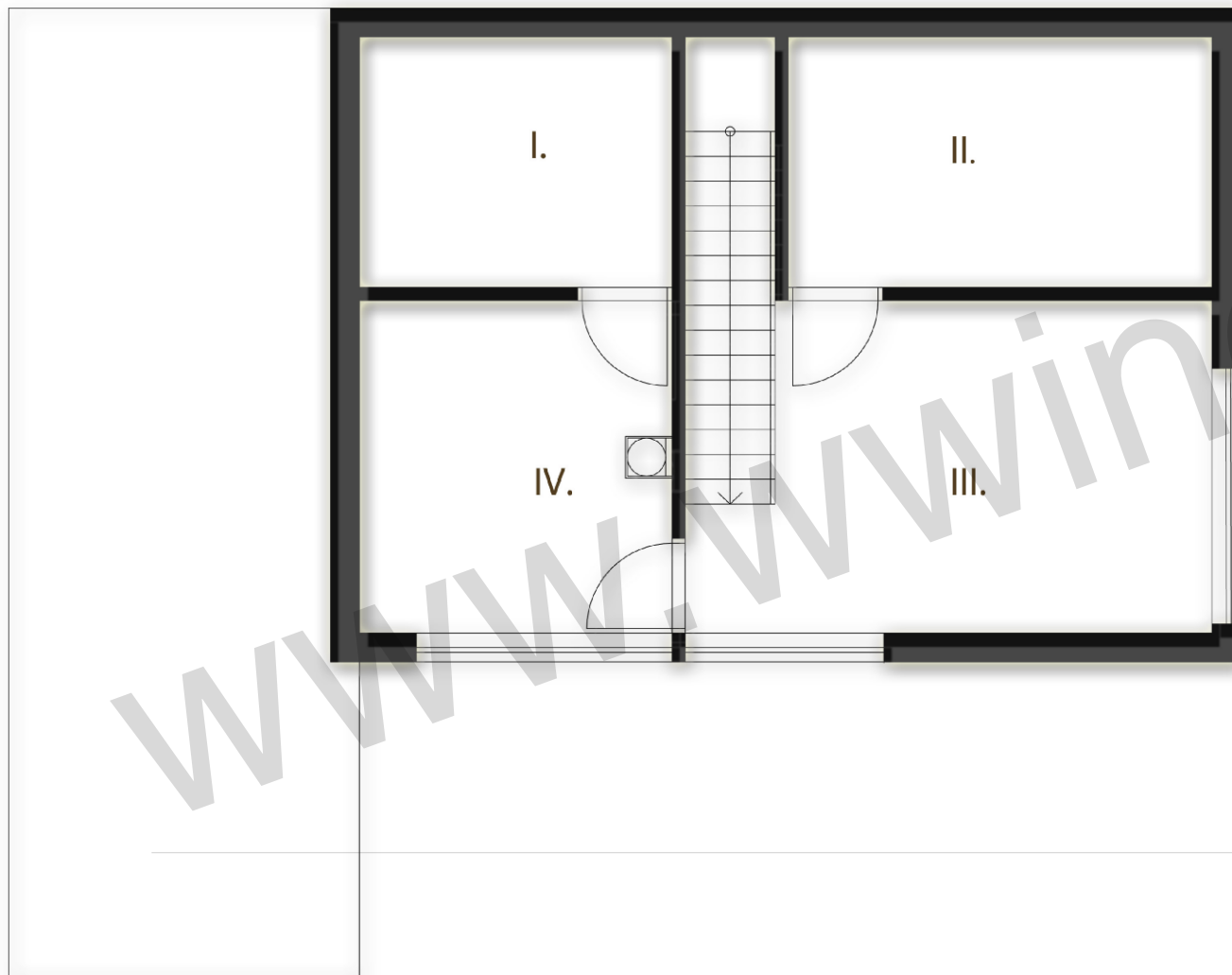
I. KOUPELNA	8,75 m ²
II. CHODBA	9,47 m ²
III. POKOJ	8,81 m ²
IV. POKOJ	11,68 m ²
V. LOŽNICE	11,59 m ²

MĚŘÍTKO 1:50



PŮDORYS 3.NP

RD AXIS

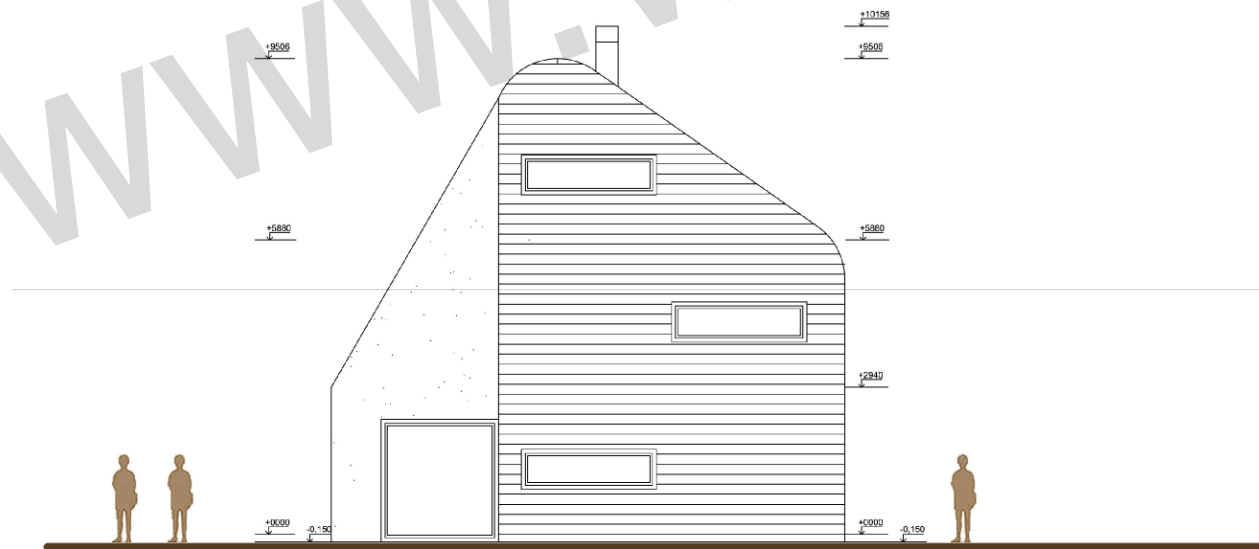
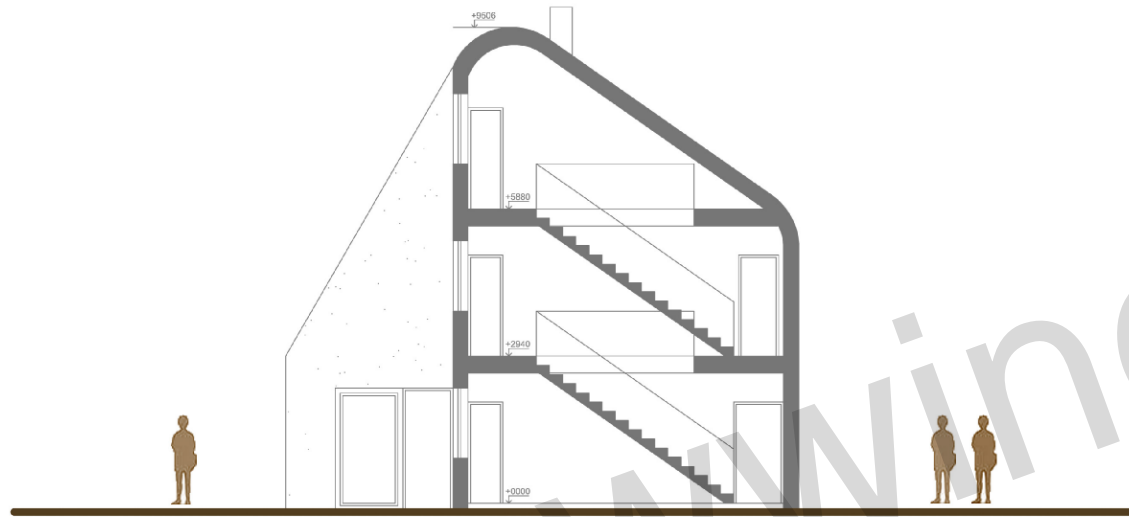
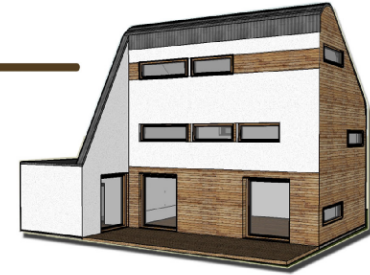


I. KOMORA	8,75 m ²
II. KOMORA	11,86 m ²
III. PRACOVNA	16,21 m ²
IV. POKOJ	11,59 m ²

MĚŘÍTKO 1:50



ŘEZ
RD AXIS



MĚŘÍTKO 1:100